

6 Agriculture



INTRODUCTION

This chapter presents an overview of Victoria's agricultural performance as compared with Australia. Data are provided on the gross value of commodities produced, the major agricultural activities within statistical divisions, the area and production of agricultural commodities, and information concerning livestock and livestock products.

The 1990 Season

The 1989-90 Agricultural Census covered 33,306 establishments with agricultural activity, which was 4 per cent more than the previous season. Census results showed a general increase in livestock numbers, as well as increased output of livestock products compared to the previous year.

Wool production rose by 8 per cent to 143,000 tonnes, but the gross value was \$1.1 billion less than the previous year, due to a marginally lower average unit value. The number of sheep shorn increased by nearly 5 per cent, while the average yield for sheep and lambs was marginally higher at 4.4 kg per head.

It was a good season, with production increases for fruit, vegetables, and fodder crops. Compared to the previous season the gross value of crops, including fruit and vegetables, rose by 7 per cent to \$1.8 billion.

Both the area sown and the production of cereal grains increased, reversing the downward trend of the last three years. Gross value of cereals for grain amounted to a record \$580 million.

The total gross value of agricultural commodities produced was a record figure of just over \$5.1 billion. This was achieved due to a modest 4 per cent rise for the 1990 season.

Victoria compared with Australia

In terms of farm income, Victoria's share for the latest 6 year period (1984-85 to 1989-90) fluctuated markedly. Farm income decreased slightly from \$1,196m in 1988-89 to \$1,152m in 1989-90. The 1989-90 Victorian figure represented 29.9 per cent of the total Australian farm income of \$3,849m.

The Gross Value of Agricultural Commodities Produced (GVACP) provides a measure of the output from farming. In 1989-90, the GVACP for Victoria was \$5,180m, or 22 per cent of the Australian total of \$23,156m. In terms of value, Victoria produced 18 per cent of Australia's crops, 22 per cent of livestock slaughtered, and 27 per cent of livestock products (wool, milk, eggs, and honey).

Scope of the Agricultural Census

Statistics in this publication are, in general, derived from the Agricultural Census conducted each year throughout Australia at 31 March, which collects data from establishments with agricultural activity.

The ABS excludes from the Census establishments with an Estimated Value of Agricultural Operations (EVAO) less than a certain cut-off level. This cut-off level is reviewed from time to time. From 1981-82 to 1985-86 establishments were excluded from the Census if they had, or were expected to have, an EVAO of less than \$2,500. From the 1986-87 Census, the cut-off value was raised to \$20,000.

EVAO is an aggregation of derived values for all crop and livestock activity for each unit. It should be noted that EVAO is applicable *only for Industry Coding and Size Valuation purposes*. It is NOT an indicator of receipts obtained by units, nor of the actual value of agricultural commodities produced by these units.

TABLE 6.1 AUSTRALIAN NATIONAL ACCOUNTS: GROSS DOMESTIC PRODUCT AT FACTOR COST, AGRICULTURE, FORESTRY, FISHING, AND HUNTING INDUSTRY

Year	Gross Domestic Product at factor cost		
	Victoria	Australia	Victoria as a percentage of Australia
	\$m	\$m	per cent
1984-85r	1,723	8,795	19.6
1985-86r	1,875	8,803	21.3
1986-87r	2,246	9,709	23.1
1987-88r	2,630	11,369	23.1
1988-89r	3,007	13,770	21.8
1989-90	3,143	14,110	22.3

Source: ABS, Cat. No. 5220.0 and Cat. No. 5204.0.

TABLE 6.2 AUSTRALIAN NATIONAL ACCOUNTS : FARM INCOME

Year	Gross Domestic Product at factor cost		
	Victoria	Australia	Victoria as a percentage of Australia
	\$m	\$m	per cent
1984-85r	476	2,704	17.6
1985-86r	455	1,435	31.7
1986-87r	736	1,887	39.0
1987-88r	976	3,222	30.3
1988-89r	1,196	4,388	27.3
1989-90	1,152	3,849	29.9

Source: ABS, Cat. No. 5204.0 and Cat. No. 5220.0.

TABLE 6.3 VALUE OF AGRICULTURAL COMMODITIES PRODUCED, VICTORIA
(\$'000)

Particulars	Year ended 30 June					
	1985	1986	1987	1988	1989	1990
Crops -						
Cereals for grain	588,176	480,321	525,136	421,509	502,434	578,167
Hay	82,103	143,698	181,003	148,406	211,254	234,627
Industrial crops	35,776	33,091	34,329	48,562	44,675	44,228
Vegetables	158,496	185,605	227,351	255,994	291,792	345,303
Grapes	114,014	123,000	117,776	149,323	156,215	141,160
Fruit	151,554	154,030	203,604	202,101	220,127	233,050
Other	131,078	158,528	186,862	269,598	232,317	234,334
Total	1,261,197	1,278,273	1,476,061	1,495,493	1,658,814	1,810,869
Livestock slaughtering and other disposals -						
Cattle and calves	484,082	520,269	561,154	570,499	625,307	706,928
Sheep and lambs	179,647	178,677	259,275	270,033	233,308	180,182
Other	258,121	251,327	249,424	294,405	318,831	332,799
Total	921,851	950,273	1,069,853	1,134,937	1,177,446	1,219,909
Livestock products -						
Wool	502,306	542,076	726,259	1,144,831	1,159,326	1,099,775
Dairy products	473,360	557,935	643,778	747,811	904,065	956,927
Other	84,322	84,322	86,327	84,633	91,815	92,649
Total	1,059,988	1,184,647	1,456,364	1,977,275	2,155,206	2,149,351
Grand total	3,243,036	3,413,193	4,002,278	4,607,705	4,991,466	5,178,442

TABLE 6.4 GROSS VALUE OF AGRICULTURAL COMMODITIES PRODUCED 1989-90
(\$'000)

	Victoria	Australia	Victoria as a percentage of Australia
Crops -			
Cereals for Grain	578,200	4,022,600	14.3
Hay	234,600	543,100	43.1
Industrial Crops	44,200	1,701,900	2.5
Vegetables	345,300	1,328,200	25.9
Grapes	141,200	392,200	36.0
Fruit	233,000	1,022,100	22.7
Other	234,300	866,200	27.0
Total	1,810,800	9,876,300	18.3
Livestock Slaughtering and other disposals -			
Cattle and Calves	706,900	3,582,200	19.7
Sheep and Lambs	180,200	495,000	36.4
Other	332,800	1,396,000	23.8
Total	1,219,900	5,473,200	22.2
Livestock Products -			
Wool	1,099,800	5,572,200	19.7
Dairy Products	956,900	1,749,000	54.7
Other	92,600	485,500	19.0
Total	2,149,300	7,806,700	27.5
Grand total	5,180,000	23,156,200	22.3

TABLE 6.5 NUMBER OF ESTABLISHMENTS, WITH AGRICULTURAL ACTIVITY, AREA, AND LAND UTILISATION, BY STATISTICAL DIVISION 1989-90

Statistical division	Number of establishments (a)	Area used	Sown pasture	Native	Balance of	Total area of
		for crops(b)(c)	and lucerne	pasture	establishments	establishments
		'000 ha	'000 ha	'000 ha	'000 ha	'000 ha
Melbourne	1,579	16	94	26	35	171
Barwon	1,674	25	285	77	66	453
South Western	5,011	47	1,340	212	164	1,764
Central Highlands	1,895	57	523	116	97	794
Wimmera	3,323	775	963	171	481	2,390
Northern Mallee	3,596	705	679	376	660	2,419
Loddon-Campaspe	3,338	224	787	250	267	1,528
Goulburn	5,101	94	774	208	212	1,289
North Eastern	1,978	27	320	99	242	688
East Gippsland	1,313	8	242	260	400	910
Central Gippsland	3,579	8	423	57	69	556
East Central	919	4	73	10	14	101
Total Victoria	33,306	1,989	6,504	1,863	2,706	13,062

(a) Includes non land-based bee keeping establishments (i.e. bee keeping activity not permanently located at one site).

(b) Excludes area of pasture cut for hay or seed.

(c) Duplicated area included if double-cropping occurred.

TABLE 6.6 NUMBER OF ESTABLISHMENTS WITH AGRICULTURAL ACTIVITY, CLASSIFIED BY EVAO AND MAIN ACTIVITY OF ESTABLISHMENT, BY STATISTICAL DIVISION, VICTORIA, 1989-90 (a)

Main activity of establishment	Estimated value of agricultural operations (EVAO) (\$'000)						Total establishments
	<20	20-39	40-59	60-99	100-199	200+	
MELBOURNE STATISTICAL DIVISION							
Vegetables	5	19	29	53	84	114	304
Meat cattle	53	115	71	40	18	3	300
Orchard and other fruit	21	31	25	46	52	41	216
Nurseries	42	42	23	38	22	30	197
Poultry	5	11	10	19	29	60	134
Potatoes	-	1	-	3	1	4	9
Other	58	95	77	79	79	31	419
Total	184	314	235	278	285	283	1,579
BARWON STATISTICAL DIVISION							
Milk cattle	2	18	48	156	269	80	573
Sheep	22	104	78	121	143	70	538
Meat cattle	33	82	33	24	12	5	189
Other	25	74	45	66	78	86	374
Total	82	278	204	367	502	241	1,674
SOUTH WESTERN STATISTICAL DIVISION							
Sheep	35	153	222	464	746	468	2,088
Milk cattle	11	47	86	417	811	228	1,600
Sheep and meat cattle	11	51	78	100	170	178	588
Meat cattle	70	199	115	90	47	20	541
Other	28	30	20	27	28	61	194
Total	155	480	521	1,098	1,802	955	5,011

TABLE 6.6 NUMBER OF ESTABLISHMENTS WITH AGRICULTURAL ACTIVITY, CLASSIFIED BY EVAO AND MAIN ACTIVITY OF ESTABLISHMENT, BY STATISTICAL DIVISION, VICTORIA, 1989-90 (a) - continued

Main activity of establishment	Estimated value of agricultural operations EVAO (\$'000)						Total establishments
	<20	20-39	40-59	60-99	100-199	200+	
CENTRAL HIGHLANDS STATISTICAL DIVISION							
Sheep	28	146	161	255	396	228	1,214
Sheep and meat cattle	7	35	37	29	24	12	144
Potatoes	-	5	8	24	38	65	140
Sheep and cereals	3	4	11	19	40	28	105
Meat cattle	20	37	15	16	5	1	94
Other	14	33	30	41	49	31	198
Total	72	260	262	384	552	365	1,895
WIMMERA STATISTICAL DIVISION							
Sheep and cereals	5	65	117	267	567	444	1,465
Cereal grains	15	68	88	167	297	263	898
Sheep	26	117	89	192	247	91	762
Other	30	32	26	34	38	38	198
Total	76	282	320	660	1,149	836	3,323
NORTHERN MALLEE STATISTICAL DIVISION							
Grapes	23	183	337	481	325	79	1,428
Sheep and cereals	2	27	33	106	253	348	769
Cereal grains	3	22	47	73	148	215	508
Orchard and other fruit	17	29	31	42	51	57	227
Other	63	101	89	147	170	94	664
Total	108	362	537	849	947	793	3,596
LODDON-CAMPASPE STATISTICAL DIVISION							
Sheep	39	188	192	238	281	119	1,057
Milk cattle	8	17	36	214	358	97	730
Sheep and cereals	3	50	74	159	212	130	628
Meat cattle	35	96	49	31	20	6	237
Sheep and meat cattle	5	49	32	47	52	15	200
Pigs	-	9	5	6	25	35	80
Other	45	61	60	68	77	95	406
Total	135	470	448	763	1,025	497	3,338
GOULBURN STATISTICAL DIVISION							
Milk cattle	19	57	109	590	843	157	1,775
Meat cattle	107	235	130	94	56	7	629
Sheep and meat cattle	18	94	97	143	130	49	531
Orchard and other fruit	5	23	30	59	102	155	374
Sheep and cereals	5	32	50	103	79	28	297
Cereal grains	10	6	2	2	4	1	25
Meat cattle and cereals	1	3	5	10	4	-	23
Other	104	242	245	313	342	171	1,257
Total	269	692	663	1,334	1,560	583	5,101

TABLE 6.6 NUMBER OF ESTABLISHMENTS WITH AGRICULTURAL ACTIVITY, CLASSIFIED BY EVAO AND MAIN ACTIVITY OF ESTABLISHMENT, BY STATISTICAL DIVISION, VICTORIA, 1989-90 (a) - continued

Main activity of establishment	Estimated value of agricultural operations EVAO (\$'000)						Total establishments
	<20	20-39	40-59	60-99	100-199	200+	
NORTH EASTERN STATISTICAL DIVISION							
Meat cattle	52	242	188	158	73	21	734
Milk cattle	2	11	27	101	165	42	348
Sheep and meat cattle	3	53	61	69	71	22	279
Tobacco	1	8	15	43	75	47	189
Other	27	66	68	102	100	65	428
Total	85	380	359	473	484	197	1,978
EAST GIPPSLAND STATISTICAL DIVISION							
Meat cattle	27	140	75	65	43	7	357
Milk cattle	1	8	16	76	168	72	341
Sheep and meat cattle	2	32	39	55	64	34	226
Other	22	49	46	84	111	77	389
Total	52	229	176	280	386	190	1,313
CENTRAL GIPPSLAND STATISTICAL DIVISION							
Milk cattle	14	60	152	545	941	225	1,937
Meat cattle	117	357	182	151	94	26	927
Other	38	103	104	136	158	176	715
Total	169	520	438	832	1,193	427	3,579
EAST CENTRAL STATISTICAL DIVISION							
Milk cattle	4	19	40	104	157	21	345
Meat cattle	41	115	53	41	20	8	278
Other	11	40	36	60	74	75	296
Total	56	174	129	205	251	104	919

(a) The period covered in this and most subsequent tables in this Chapter is the 1989-90 season, which in general refers to the year ended 31 March 1990 but also includes activities which may have been finalised after 31 March (e.g. grape picking). In most of these activities the growing period occurred before 31 March.

AGRICULTURAL COMMODITIES

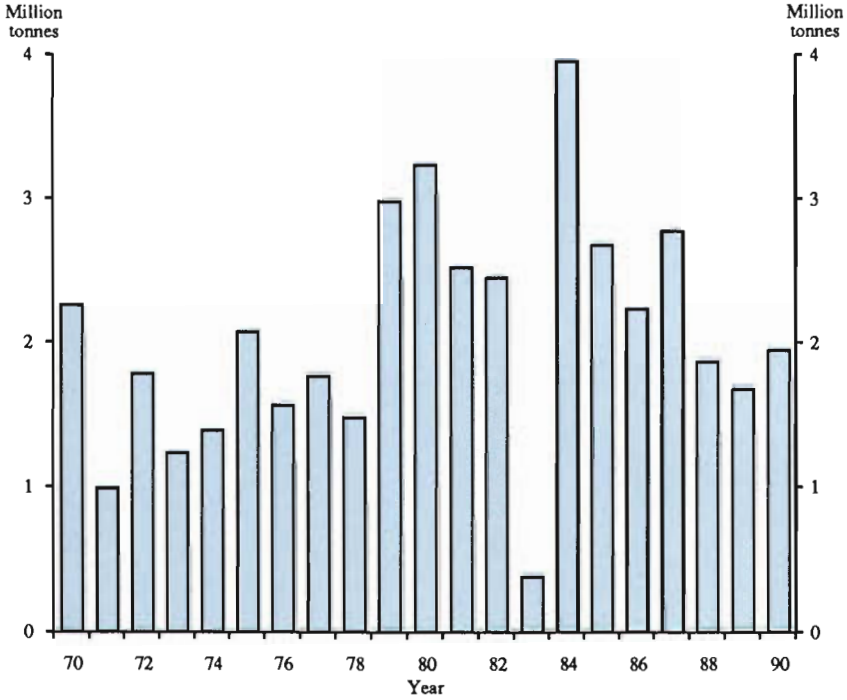
Field crops

The cereals wheat, oats, and barley are the principal field crops in Victoria. These, together with hay production, green feed, and silage, represent about 80 per cent of the total area sown, although there is some variation from year to year.

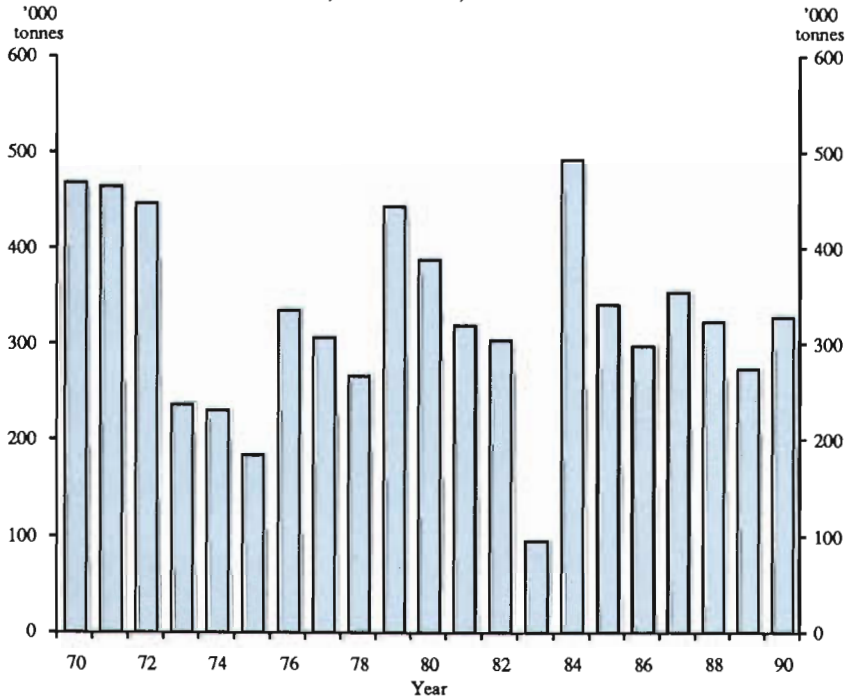
Wheat

Wheat is Victoria's largest crop in terms of area and production. The average area sown in the six-year period 1984-85 to 1989-90 was 1.2 million hectares, about 48 per cent of the State's total area under crops. Over the same period production averaged 2.2 million tonnes. In Victoria, wheat remained a significant crop in 1989-90, representing 65 per cent of total production of cereals for grain. The value of wheat produced in Victoria amounted to \$391m in 1989-90.

WHEAT PRODUCTION, VICTORIA, YEAR ENDED 31 MARCH



OAT PRODUCTION, VICTORIA, YEAR ENDED 31 MARCH

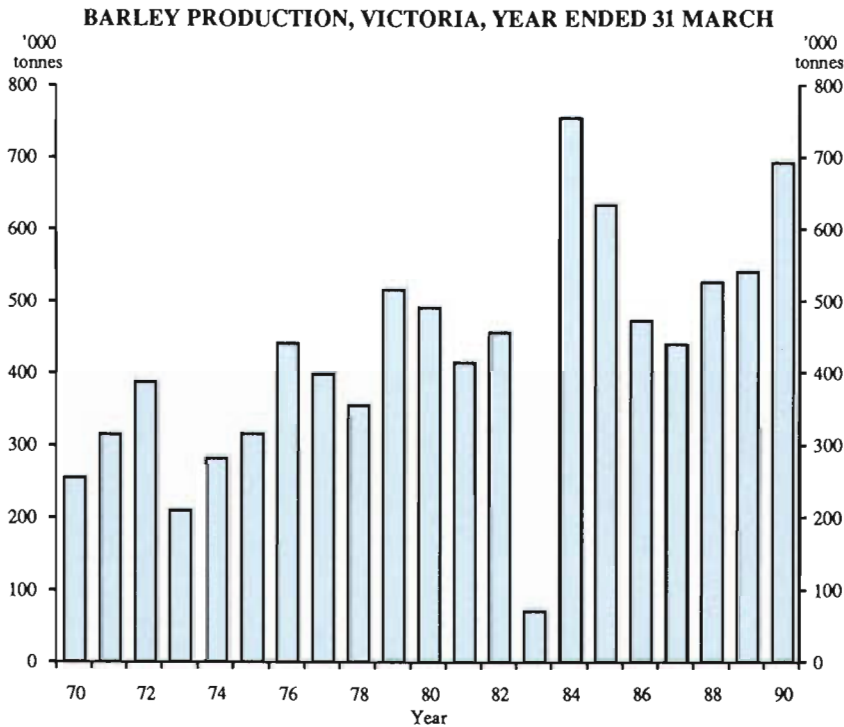


Oats

Oats are sown for grain production, winter grazing, and hay production. The average annual area sown for grain, grazing, and hay between 1984-85 and 1989-90 was 206,833 hectares, of which about 77 per cent was harvested for grain, some of it after being grazed during the winter. Generally, 60 per cent of oats produced is held on farms, 25 per cent is used for compound/urban feed markets, 5 per cent is milled and 10 per cent is exported. Within the feed market, the horse racing industry takes around 25,000 tonnes each year of the higher quality oats available for feed.

Barley

The area sown to barley for all purposes in 1989-90 was 388,719 hectares, slightly higher than the six-year average of 372,333 hectares. While barley is grown in all statistical divisions, production has been traditionally centred in two distinct areas where high quality grain is produced. The highest production is in the south-west of the Northern Mallee and the adjacent north-western Wimmera. The second source of high quality barley grain is in an area between Melbourne, Geelong, and Bacchus Marsh in southern Victoria.



Maize

The total area of maize for grain fell from 1200 hectares in 1984-85 to 282 hectares in 1989-90. Production fell from 6,300 tonnes in 1984-85 to 1,040 tonnes in 1989-90.

Oil seeds

The production of rapeseed, of which 'canola' is a cultivar, increased from 8,711 tonnes in 1984-85 to a high of 24,000 tonnes in 1985-86, falling back to 16,609 tonnes in 1989-90. However during the six year period, yields were the highest in 1988-89 and 1989-90. Safflower production fell in 1989-90 to 13,580 tonnes, while the area sown decreased to 21,842 hectares.

Grain legumes

The legumes, predominantly field peas and lupins for grain, have generally shown strong growth in recent years. The area of lupins sown has risen from about 100 hectares in 1973 to just under 36,000 hectares in 1989-90. The 1989-90 production of lupins was 41,200 tonnes, an increase of 11 per cent over the previous year, while the area sown was 1,000 hectares more than in 1988-89.

The production of field peas fell to 198,158 tonnes in 1989-90. This was 24.9 per cent less than the previous harvest of 263,700 tonnes in 1988-89. The area sown to field peas decreased to 154,366 ha this year, compared to 221,100 ha in 1988-89.

TABLE 6.7 WHEAT FOR GRAIN, VICTORIA

Season	Area	Production	Average yield per hectare	A.S.W.(a) wheat standard
	'000 ha	'000 tonnes	tonnes	kg/hl
1984-85	1,523	2,666	1.75	84.1
1985-86	1,508	2,250	1.49	80.9
1985-86 (b)	1,488	2,225	1.56	80.9
1986-87	1,364	2,795	2.05	80.2
1987-88	1,026	1,882	1.84	82.7
1988-89	931	1,691	1.82	82.5
1989-90	952	1,961	2.06	83.5

(a) Australian Standard White, quoted in kilograms per hectolitre.

(b) To assist in gauging the degree of change of the effect of raising the EVAO cut-off from \$2,500 or more to \$20,000 or more, data for 1985-86 have been tabulated on both bases.

TABLE 6.8 OATS FOR GRAIN, VICTORIA

Season	Area	Production	Average yield per hectare
	'000 ha	'000 tonnes	tonnes
1984-85	228	343	1.50
1985-86	212	300	1.42
1985-86 (a)	204	290	1.43
1986-87	215	356	1.66
1987-88	216	325	1.51
1988-89	189	276	1.46
1989-90	189	330	1.75

(a) See footnote (b) to Table 6.7.

TABLE 6.9 BARLEY FOR GRAIN, VICTORIA

Season	Area		Production		Average yield per hectare	
	'000 ha		'000 tonnes		tonnes	
1984-85	485		637		1.31	
1985-86	389		476		1.22	
1985-86(a)	379		464		1.22	
1986-87	265		444		1.68	
1987-88	366		529		1.45	
1988-89	350		544		1.55	
1989-90	389		696		1.79	

(a) See footnote (b) to Table 6.7.

TABLE 6.10 OTHER CEREAL CROPS FOR GRAIN

Season	Rye		Maize		Millet		Triticale	
	Area	Production	Area	Production	Area	Production	Area	Production
	'000 ha	'000 tonnes	'000 ha	'000 tonnes	'000 ha	'000 tonnes	'000 ha	'000 tonnes
1984-85	5.4	3.3	1.2	6.3	1.9	2.9	8.9	13.6
1985-86	10.0	5.9	1.1	5.0	1.7	2.6	11.9	18.6
1985-86 (a)	10.0	5.9	1.0	5.0	1.6	2.5	11.7	18.4
1986-87	22.8	19.0	0.6	3.2	2.8	4.5	17.6	28.5
1987-88	11.6	6.8	1.3	5.5	1.4	2.1	18.3	27.4
1988-89	8.1	4.8	0.3	1.4	1.0	1.6	16.0	25.8
1989-90	8.3	4.7	0.3	1.0	1.8	3.0	14.8	25.9

(a) See footnote (b) to Table 6.7.

TABLE 6.11 SILAGE MADE, AND FARM STOCKS OF SILAGE AND HAY, BY STATISTICAL DIVISION

(tonnes)

Statistical division	Silage made, season 1989-90		Stocks at 31 March 1990	
	Silage	Hay	Silage	Hay
Melbourne	2,694	45,771	3,588	45,771
Barwon	16,973	170,656	19,648	170,656
South Western	59,412	519,462	48,794	519,462
Central Highlands	5,887	191,826	14,065	191,826
Wimmera	940	241,230	4,663	241,230
Northern Mallee	840	94,920	7,737	94,920
Loddon-Campaspe	9,986	314,857	23,129	314,857
Goulburn	11,708	405,238	16,398	405,238
North Eastern	21,228	156,206	35,654	156,206
East Gippsland	7,025	80,967	16,954	80,967
Central Gippsland	75,872	280,200	40,628	280,200
East Central	10,739	52,152	7,865	52,152
Total Victoria	223,303	2,553,484	239,122	2,553,484

TABLE 6.12 HAY PRODUCTION, VICTORIA, SEASON 1989-90

<i>Variety</i>	<i>Area</i>	<i>Production</i>	<i>Average yield per hectare</i>
	hectares	tonnes	tonnes
Meadow grass and clover	429,984	1,696,308	3.95
Oaten	28,847	112,986	3.92
Lucerne	25,647	138,836	5.41
Wheaten	5,211	12,937	2.48
Barley and other	2,167	5,172	2.39
Total	491,856	1,966,239	4.00

TABLE 6.13 SELECTED OILSEEDS PRODUCTION, VICTORIA

<i>Season</i>	<i>Area (hectares)</i>	<i>Production (tonnes)</i>	<i>Average yield per hectare (tonnes)</i>
LINSEED			
1984-85	1,791	2,222	1.24
1985-86	3,399	5,346	1.57
1985-86 (a)	3,374	5,325	1.58
1986-87	2,618	2,926	1.12
1987-88	4,040	4,336	1.07
1988-89	1,981	2,539	1.28
1989-90	709	681	1.00
RAPESEED (b)			
1984-85	8,592	8,711	1.01
1985-86	21,785	24,543	1.13
1985-86 (a)	21,670	24,434	1.13
1986-87	18,117	21,699	1.20
1987-88	21,080	22,730	1.08
1988-89	13,345	16,327	1.22
1989-90	12,392	16,609	1.30
SAFFLOWER			
1984-85	7,038	4,569	0.65
1985-86	9,432	6,264	0.66
1985-86 (a)	9,174	6,136	0.67
1986-87	10,448	7,425	0.71
1987-88	20,878	14,467	0.69
1988-89	25,824	20,126	0.78
1989-90	21,842	13,580	0.60
SUNFLOWER			
1984-85	12,355	14,407	1.17
1985-86	13,240	14,894	1.12
1985-86 (a)	12,806	14,297	1.12
1986-87	7,359	8,019	1.09
1987-88	4,161	7,234	1.74
1988-89	3,943	6,117	1.55
1989-90	3,187	5,331	1.70

(a) See footnote (b) to Table 6.7.

(b) Includes canola.

TABLE 6.14 LEGUMES FOR GRAIN, VICTORIA

Season	Lupins		Field peas		Total (a)	
	Area	Production	Area	Production	Area	Production
	'000 ha	'000 tonnes	'000 ha	'000 tonnes	'000 ha	'000 tonnes
1984-85	20.1	20.7	84.8	86.3	105.7	107.7
1985-86	24.2	30.4	136.7	137.0	161.9	168.6
1985-86 (b)	23.5	29.7	135.9	136.5	160.4	167.3
1986-87	27.6	37.2	197.8	334.8	232.5	384.7
1987-88	37.2	35.2	236.8	258.5	289.8	311.2
1988-89	34.9	37.0	221.1	263.7	280.7	335.6
1989-90	35.9	41.2	154.4	198.2	237.7	314.9

(a) Includes chick peas, dried edible beans, etc.

(b) See footnote (b) to Table 6.7.

TABLE 6.15 AREA, PRODUCTION, AND YIELD OF LEGUMES FOR GRAIN, BY STATISTICAL DIVISION, YEAR ENDED 31 MARCH 1990

Statistical division	Lupins for grain			Field peas for grain			Total legumes for grain (a)		
	Area	Prod'n	Yield	Area	Prod'n	Yield	Area	Prod'n	Yield
	'000 ha	'000 tonnes	tonnes /ha	'000 ha	'000 tonnes	tonnes /ha	'000 ha	'000 tonnes	tonnes /ha
Melbourne	0.1	0.1	0.8	-	-	-	0.2	0.1	0.7
Barwon	0.6	0.8	1.3	0.7	1.3	1.8	1.3	2.0	1.5
South Western	1.5	1.8	1.2	0.3	0.5	1.8	1.8	2.3	1.3
Central Highlands	0.8	1.2	1.5	0.2	0.2	1.0	1.1	1.5	1.4
Wimmera	10.2	12.8	1.2	84.5	114.1	1.3	132.9	187.6	1.4
Northern Mallee	5.6	3.0	0.5	54.8	63.2	1.2	61.7	68.0	1.1
Loddon-Campaspe	5.4	7.8	1.4	12.7	17.7	1.4	25.6	37.6	1.5
Goulburn	8.8	11.0	1.3	1.0	1.2	1.2	9.9	12.4	1.3
North Eastern	2.7	2.6	1.0	-	-	0.6	2.8	2.7	1.0
East Gippsland	0.1	0.1	1.5	-	-	0.2	0.3	0.5	1.8
Central Gippsland	-	-	0.8	0.1	-	0.4	-	-	0.4
East Central	-	-	-	-	-	-	-	-	-
Total Victoria	35.9	41.2	1.1	154.4	198.2	1.3	237.7	314.9	1.3

(a) Includes chick peas, dried edible beans, etc.

FRUIT

Area planted

In Victoria in 1989-90, the area planted with fruit, nuts, and berries was 21,676 hectares and the area of vineyards was 18,916 hectares. Although this total of 40,591 hectares is only about 1.6 per cent of the total area under crops in Victoria, fruit and vine growing make a valuable contribution to the economy of the State.

Tree fruit

In Victoria, the main fruit growing areas are in the Goulburn, Northern Mallee, Melbourne, and East Central Statistical Divisions. There are smaller areas in the North Eastern Statistical Division and also in the Gippsland, Bacchus Marsh, and Ballarat areas.

Small fruit

Climatic requirements have restricted the commercial production of strawberries, and cane and bramble fruits in particular, to the cooler southern regions of Victoria, so that most of the fruit is grown in the hills of the Eastern Melbourne Metropolitan and Mornington Peninsula areas which are relatively close to the Melbourne market. During the last few years fruit growers in other parts of the State interested in diversification have taken up the production of strawberries, raspberries and kiwi fruit, particularly for the fresh fruit market.

Nuts

A wide range of nuts can be grown in Victoria. Examples are almonds, walnuts, chestnuts, hazelnuts, pecans, and pistachios. In the past, only a few of these trees have been grown in commercial plantings. Almonds were mainly planted in the northern area; walnuts and chestnuts in situations with deep soil in the north-east, the Dandenongs, and Gippsland; and hazelnuts on shallower soils in the north-east and the Dandenongs. In 1989-90, production of nuts was 2,078 tonnes.

Grapes

In Victoria, most wine grapes are grown under irrigation in the Northern Mallee Statistical Division, and in the Goulburn Valley and the Murray Valley areas. Wine grape varieties are also being grown in the traditional non-irrigated areas in the north-east (Rutherglen) and in the west (Great Western) of the State. With the increasing interest in wine grapes over recent years, many vineyards of varying sizes have been established in other suitable areas throughout the State.

In 1989-90, Victoria had 18,916 hectares of bearing vines which produced 85,225 tonnes of grapes for winemaking, and 215,284 tonnes for drying and table grapes. There were 1,265 hectares of non-bearing vines.

Table grape production in recent years has risen considerably, increasing from 16,312 tonnes in 1984-85 to 27,350 tonnes in 1989-90.

OTHER INTENSIVE CROPS

Vegetables

Most of the fresh vegetable production in Victoria is located in the Melbourne, Central Highlands, Loddon-Campaspe and Goulburn statistical divisions.

Potatoes are mainly grown in the Central Highlands around Ballarat, at Thorpdale in the Gippsland Hills, and at Koo-wee-rup, with additional areas around Warrnambool, the Bellarine Peninsula, Colac, the Otway Ranges, and metropolitan market gardens. In 1989-90, the gross value of potato production was \$130m or 7 per cent of the total value of production of crops.

The tomato industry in Victoria is predominantly processing-orientated with most of the crop produced in the irrigated areas between Shepparton and Rochester in northern Victoria.

Tobacco

The tobacco industry in Victoria is centred at Myrtleford in the north-east with production areas in the adjacent valleys of the Buffalo, Ovens, Upper King, and Kiewa Rivers. The 204 tobacco growers in Victoria produced 5,001 tonnes of cured leaf in 1989-90.

Hops

In Victoria, production of hops is confined to the alluvial soils in the valleys of the Ovens and King Rivers where good quality irrigation water is available to supplement the natural summer rainfall. The hop is a summer growing perennial plant, propagated from root cuttings, that develops long vines supported on a post and wire trellis system about six metres above the ground surface. In 1989-90 there were 19 hop gardens in Victoria with a total area of 348 hectares, producing 577 tonnes (dried weight) of hops for both domestic brewers and export markets.

Plant nurseries

In 1989-90, there were 390 nurseries in Victoria with a total production area of 3,010 hectares (including establishments growing cultivated turf).

TABLE 6.16 NUMBER OF SELECTED BEARING AND NON BEARING POME AND STONE FRUIT TREES BY STATISTICAL DIVISION, AT 31 MARCH 1990
(‘000)

<i>Statistical division</i>	<i>Apples</i>	<i>Pears</i>	<i>Peaches</i>	<i>Apricots</i>	<i>Nectarines</i>
Melbourne	530	59	97	1	31
Barwon	2	-	1	1	-
South Western	10	-	1	1	-
Central Highlands	113	18	5	6	9
Wimmera	2	1	2	-	1
Northern Mallee	2	2	53	66	110
Loddon-Campaspe	316	23	-	-	-
Goulburn	475	1,450	582	191	46
North Eastern	154	1	7	1	-
East Gippsland	3	-	2	-	-
Central Gippsland	45	4	6	-	3
East Central	136	5	10	-	8
Total Victoria	1,788	1,565	767	268	208

TABLE 6.17 NUMBER OF SELECTED BEARING AND NON BEARING CITRUS TREES BY STATISTICAL DIVISION, AT 31 MARCH 1990
(‘000)

<i>Statistical division</i>	<i>Oranges</i>	<i>Lemons and limes</i>	<i>Mandarins</i>
Melbourne	-	9	-
Barwon	-	-	-
South Western	-	-	-
Central Highlands	-	-	-
Wimmera	-	-	-
Northern Mallee	1,023	47	98
Loddon-Campaspe	-	-	-
Goulburn	98	29	1
North Eastern	11	5	-
East Gippsland	-	-	-
Central Gippsland	-	-	-
East Central	-	3	-
Total Victoria	1,132	93	99

TABLE 6.18 ORCHARD FRUIT PRODUCTION, VICTORIA
(tonnes)

Type of fruit	Year ended 31 March -						
	1985	1986	1986(a)	1987	1988	1989	1990
Pears	114,087	120,933	120,638	123,859	138,814	119,012	142,419
Apples	92,379	85,404	84,902	99,801	83,451	99,554	94,098
Peaches	32,232	31,691	31,355	31,491	38,061	28,351	32,456
Apricots	5,936	7,682	7,297	6,365	8,567	8,384	9,279
Cherries	1,170	1,198	1,121	1,193	1,092	971	1,291
Plums and prunes	2,702	2,877	2,664	2,865	3,150	3,311	3,411
Olives	810	690	690	43	111	121	183
Nectarines	1,696	1,975	1,914	2,074	2,536	2,425	3,393
Quinces	48	41	36	33	23	26	14
Figs	4	3	2	2	5	6	6
Oranges -							
Valencias	37,695	40,008	39,303	47,132	40,680	35,461	47,733
Navels	19,470	20,481	20,145	20,572	22,094	21,620	22,319
Other	194	255	255	324	380	331	305
Lemons and limes	8,098	8,466	8,257	7,454	6,363	7,265	7,468
Grapefruit	5,237	6,837	6,772	6,033	6,801	6,079	7,123
Mandarins	3,278	2,652	2,571	3,080	2,783	3,259	4,078

(a) See footnote (b) to Table 6.7.

TABLE 6.19 SMALL FRUIT PRODUCTION, VICTORIA
(kilograms)

Type of fruit	Year ended 31 March -						
	1985	1986	1986(a)	1987	1988	1989	1990
Strawberries	1,481,776	1,475,457	1,430,480	1,619,267	1,747,881	1,621,007	1,665,103
Raspberries	255,031	215,712	207,053	312,030	320,055	330,469	375,779
Kiwi Fruit	103,304	239,193	237,643	567,504	860,870	1,656,630	2,238,540
Blueberries	12,988	30,471	16,489	21,374	30,893	31,545	50,274
Gooseberries	3,324	3,358	288	400	650	475	2,005
Loganberries	5,280	6,680	6,680	3,585	9,128	4,410	2,947
Other berries	50,989	56,571	52,361	135,651	100,111	95,497	102,331

(a) See footnote (b) to Table 6.7.

TABLE 6.20 NUT PRODUCTION, VICTORIA
(kilograms)

Type of fruit	Year ended 31 March -						
	1985	1986	1986(a)	1987	1988	1989	1990
Walnuts	71,626	78,858	74,224	68,296	47,858	43,364	74,410
Chestnuts	46,981	49,981	27,769	28,525	52,619	52,571	102,867
Almonds	597,157	871,721	864,136	1,161,347	1,655,376	1,478,694	1,895,854

(a) See footnote (b) to table 6.7

TABLE 6.21 VITICULTURE, AREA AND PRODUCTION, VICTORIA

Season	Area (hectares)		Production (tonnes) for -	
	Bearing	Non-bearing	Wine making	Drying and table (a)
1984-85	19,132	1,352	96,807	255,631
1985-86	18,720	1,305	68,761	290,652
1985-86 (b)	18,412	1,240	68,086	288,376
1986-87	17,827	1,127	67,133	221,482
1987-88	17,591	1,172	78,407	250,789
1988-89	17,590	1,267	104,275	221,921
1989-90	17,648	1,265	85,225	215,284

(a) Production for drying is estimated as fresh weight equivalent of dried weight.

(b) See footnote (b) to Table 6.7.

TABLE 6.22 VEGETABLES FOR HUMAN CONSUMPTION, VICTORIA

Type of vegetable	Area sown (hectares)			Production (tonnes)		
	1987-88	1988-89	1989-90	1987-88	1988-89	1989-90
Potatoes	14,458	13,020	13,319	298,175	368,307	368,409
Onions	421	377	399	10,020	10,656	9,221
Carrots	1,097	1,137	1,287	33,449	40,633	48,625
Parsnips	130	113	123	5,025	2,230	2,598
Beetroot	31	28	33	335	354	421
Tomatoes	2,884	2,880	3,225	125,111	107,077	136,901
French beans	712	705	855	3,880	3,993	5,341
Green peas -						
Market (a)	135	108	93	193	164	155
Factory (b)	1,547	1,806	1,849	5,584	6,929	4,928
Cabbages	723	787	727	28,055	27,750	26,233
Cauliflowers	1,009	1,094	1,206	28,626	25,033	28,668
Lettuce	1,259	1,375	1,372	32,460	30,512	28,613
Pumpkins	386	351	518	5,651	8,338	8,691

(a) Sold in pod.

(b) Shelled weight.

TABLE 6.23 TOBACCO PRODUCTION, VICTORIA

Season	Area	Production	Average yield per hectare
	hectares	tonnes (dry)	tonnes (dry)
1984-85	2,146	4,755	2.22
1985-86	1,652	3,711	2.25
1985-86 (a)	1,649	3,708	2.25
1986-87	1,819	3,975	2.19
1987-88	2,041	5,102	2.50
1988-89	1,737	4,089	2.35
1989-90	2,116	5,001	2.36

(a) See footnote (b) to Table 6.7.

TABLE 6.24 HOP PRODUCTION, VICTORIA

Season	Area	Production	Average yield per hectare
	hectares	tonnes (a)	tonnes
1984-85	420	554	1.32
1985-86	471	643	1.37
1985-86 (b)	467	640	1.37
1986-87	336	579	1.72
1987-88	382	695	1.82
1988-89	371	680	1.84
1989-90	348	577	1.66

(a) Dried weight.

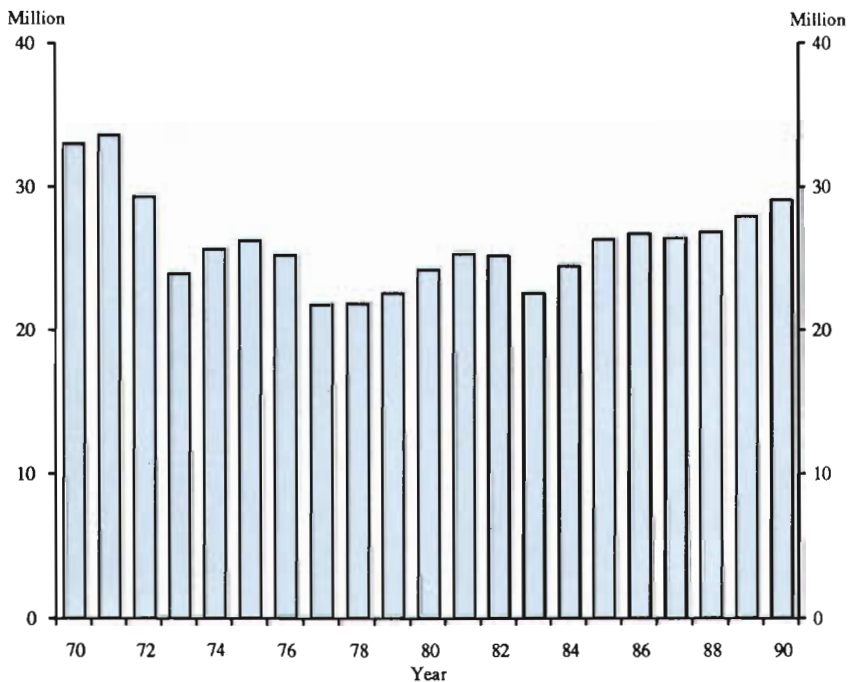
(b) See footnote (b) to Table 6.7.

LIVESTOCK AND LIVESTOCK PRODUCTS

Sheep and wool

At 31 March 1990, the Victorian sheep population was 29.3 million head, well below the 1971 peak of 33.8 million head. Almost 60 per cent of the State's sheep flock is located in the South Western, Central Highlands, and Wimmera Statistical Divisions. Wool production rose by 7.7 per cent, reaching 143,000 tonnes, with a gross value of \$1,100 million. The number of sheep shorn increased by 5 per cent while the average yield (for sheep and lambs) rose to 4.4 kilograms per head.

SHEEP NUMBERS, VICTORIA, AT 31 MARCH



Lambing

The lambing performance of the Victorian flock has fluctuated (according to seasonal conditions) around a six year average of 87.2 lambs marked for each 100 ewes mated.

Victoria's largest lambing season occurred in 1970-71, when 12.7 million lambs were marked from 14.8 million ewes mated (86 per cent), but in 1983-84 reduced matings led to the smallest lambing season (8.4 million) since 1978-79. This increased sharply in 1984-85 when 10.4 million lambs were marked from 11.7 million ewes mated (89 per cent). Since then there has been a slight decline, with 9.5 million lambs marked from 10.9 million sheep mated (87 per cent) in 1989-90.

Mutton and lamb production

Mutton, the meat from adult sheep, is mainly produced from sheep which are surplus to the wool industry, so that production patterns correspond closely to expansions and contractions in that industry. In 1989-90 mutton production was 69,000 tonnes, well down on the 1971-72 peak of 247,000 tonnes.

Prime lamb producers are found throughout the State. However, early to mid-season producers are distributed in a broad band across northern Victoria, including some irrigated areas. In addition, a considerable number of early lambs are brought from southern New South Wales for slaughter in Victoria. Mid to late-season producers are located mainly in the South Western, Central Highlands, Central Gippsland, and parts of the North Eastern Statistical Divisions of the State. In 1989-90, 111,000 tonnes of lamb were produced.

Meat cattle

The Victorian environment is very favourable for beef production with cattle able to graze on pasture throughout the year.

Most of the Victorian breeding herds are located in the South Western, Goulburn, North Eastern, East Gippsland, and Central Gippsland Statistical Divisions. A significant proportion of Victorian beef and veal production was exported during 1989-90, major markets being the USA, Japan, and Republic of Korea.

Milk cattle

Dairy farming in Victoria is largely confined to the higher rainfall areas of Gippsland, the Western District, and the northern irrigation areas. With minor fluctuations, milk cattle numbers have been gradually declining from the 1973 peak of 1,977,000. There were 1,445,000 milk cattle at 31 March 1990, 7,000 more than the previous year.

Pigs

The number of commercial establishments with pigs declined from 1,468 in 1984-85 to 918 in 1989-90. During the same period the average herd size increased from 278 to 466 pigs. This trend toward fewer but larger units is expected to continue, with the bulk of the industry becoming increasingly capital-intensive and established in grain growing areas. The number of pigs in Victoria at 31 March 1990 was 428,161.

Poultry

The trend in the Victorian egg industry has been towards larger specialised farms, with egg producers, hatcheries, and pullet growers using modern poultry housing, equipment, and labour saving machinery.

The main areas of commercial egg production in Victoria are centred on the outskirts of the Melbourne metropolitan area and in the Bendigo district, together with a large centre around Geelong, and substantial flocks in Ballarat, the Wimmera, Goulburn Valley, the north-east, and the La Trobe Valley.

Farms consisting of one person or one family usually manage 5,000 to 15,000 layers. There are, however, many larger farms employing labour with up to 40,000 layers, and a few with much bigger establishments.

In 1989-90, there were 71.4 million chickens, hens, stags, and ducks and drakes slaughtered for human consumption. The total dressed weight was 98,921 tonnes.

Most broiler farms range in capacity from 30,000 to 100,000 broilers, and with the present average of 5.5 batches of broiler chickens a year, these farms may produce from 165,000 to 550,000 broilers a year.

The main broiler production centres are located on the Mornington Peninsula, in areas east and south-east of Melbourne, and in the Geelong area - near the processing works and the main centres of consumption. Most of Victoria's production is consumed locally, with very little being exported.

Apiculture

Honey production in Victoria was 3,127 tonnes in 1989-90. The bulk of the honey produced is sold to large processors who clarify and pack the honey. Nearly 50 per cent of the annual production is exported, chiefly to the United Kingdom.

TABLE 6.25 SELECTED LIVESTOCK NUMBERS, VICTORIA
('000)

Season	Cattle			Sheep	Pigs
	Dairy	Beef	Total		
1984-85	1,559	2,017	3,576	26,471	410
1985-86	1,534	2,187	3,720	26,895	432
1985-86 (a)	1,513	1,870	3,383	25,716	427
1986-87	1,464	2,014	3,478	26,586	432
1987-88	1,436	2,038	3,474	26,997	437
1988-89	1,438	2,071	3,509	28,067	423
1989-90	1,445	2,200	3,646	29,268	428

(a) See footnote (b) to Table 6.7.

TABLE 6.26 LIVESTOCK SLAUGHTERED, VICTORIA
('000)

Types of livestock	1984-85	1985-86	1986-87	1987-88	1988-89	1989-90
Sheep	3,301	3,863	3,857	3,530	3,053	3,326
Lambs	6,777	7,987	6,634	7,111	6,264	6,200
Cattle and calves	1,971	2,045	2,081	2,054	1,875	1,995
Pigs	1,298	1,020	849	938	917	971

TABLE 6.27 SHEEP AND LAMBS BY STATISTICAL DIVISION, AT 31 MARCH 1990
(^{'000})

<i>Statistical division</i>	<i>Rams</i>	<i>Ewes</i>	<i>Wethers</i>	<i>Lambs</i>	<i>Total</i>
Melbourne	2	92	97	43	235
Barwon	19	783	413	389	1,603
South Western	86	3,871	2,266	1,954	8,178
Central Highlands	34	1,710	1,486	888	4,118
Wimmera	39	1,867	1,586	860	4,351
Northern Mallee	16	920	387	387	1,710
Loddon-Campaspe	34	1,580	1,288	736	3,639
Goulburn	33	1,414	863	543	2,851
North Eastern	9	353	191	128	680
East Gippsland	8	441	311	238	998
Central Gippsland	11	439	194	201	844
East Central	1	40	4	16	61
Total Victoria	292	13,509	9,085	6,382	29,268

TABLE 6.28 LAMBING, VICTORIA

<i>Season</i>	<i>Ewes mated</i>	<i>Lambs marked</i>	<i>Percentage of lambs marked to ewes mated</i>
	^{'000}	^{'000}	per cent
1984-85	11,744	10,446	89
1985-86	11,269	9,746	86
1985-86 (a)	10,801	9,344	86
1986-87	10,479	9,001	86
1987-88	10,662	9,399	88
1988-89	10,447	9,029	86
1989-90	10,923	9,504	87

(a) See footnote (b) to Table 6.7.

TABLE 6.29 SHEEP SHORN AND WOOL CLIPPED, VICTORIA

<i>Season</i>	<i>Number Shorn</i>		<i>Wool clipped (including crutchings)</i>		<i>Average</i>	
	<i>Sheep</i>	<i>Lambs</i>	<i>Sheep</i>	<i>Lambs</i>	<i>Per sheep</i>	<i>Per lamb</i>
	^{'000}	^{'000}	tonnes	tonnes	kg	kg
1984-85	25,784	8,306	129,728	12,744	5.0	1.5
1985-86	27,430	7,548	129,641	11,200	4.7	1.5
1985-86 (a) (b)	23,189	6,381	109,597	9,469	4.7	1.5
1986-87 (a)	22,978	5,942	115,684	9,281	5.0	1.6
1987-88 (a)	23,545	6,365	118,620	9,597	5.0	1.5
1988-89 (a)	24,357	6,225	122,566	9,927	5.0	1.6
1989-90 (a)	25,773	6,308	132,710	10,028	5.1	1.6

(a) Calculated directly from Census data collected at 31 March. Previous data were 'industry best estimates' compiled at 30 June - see publication 7211.0 for details.

(b) See footnote (b) to Table 6.7.

**TABLE 6.30 SHEEP SHORN AND WOOL CLIPPED BY STATISTICAL DIVISION,
SEASON 1989-90**

Statistical division	Number Shorn		Wool clipped (including crutchings)		Average	
	Sheep	Lambs	Sheep	Lambs	Per sheep	Per lamb
	'000	'000	tonnes	tonnes	kg	kg
Melbourne	193	39	1,059	52	5.5	1.3
Barwon	1,366	377	6,937	566	5.1	1.5
South Western	7,419	1,969	35,177	2,979	4.7	1.5
Central Highlands	3,682	731	18,263	1,150	5.0	1.6
Wimmera	3,923	871	21,716	1,412	5.5	1.6
Northern Mallee	1,284	338	7,316	603	5.7	1.8
Loddon-Campaspe	3,192	774	18,512	1,352	5.8	1.7
Goulburn	2,534	606	12,944	1,009	5.1	1.7
North Eastern	579	141	2,769	215	4.8	1.5
East Gippsland	852	216	4,419	314	5.2	1.5
Central Gippsland	699	224	3,377	345	4.8	1.5
East Central	51	22	221	31	4.4	1.4
Total Victoria	25,773	6,308	132,710	10,028	5.1	1.6

TABLE 6.31 TOTAL WOOL PRODUCTION, VICTORIA

Season	Clip	Stripped from or exported on skins (greasy)		Total quantity (greasy)
		tonnes	tonnes	tonnes
1984-85	142,472		24,816	167,288
1985-86	140,841		30,067	170,908
1985-86 (a)	135,102		n.a.	n.a.
1986-87	124,965		33,728	158,693
1987-88	128,217		32,034	160,251
1988-89	132,493		25,175	157,668
1989-90	142,737		27,974	170,711

(a) See footnote (b) to Table 6.7.

**TABLE 6.32 DISTRIBUTION OF MEAT CATTLE BY STATISTICAL DIVISION
AT 31 MARCH 1990
(*000)**

Statistical division	Bulls for service		Cows and heifers	Calves under 1 year	Other (a)	Total
	1 year and over	Under 1 year				
Melbourne	2	1	49	27	12	90
Barwon	3	1	50	28	16	96
South Western	12	4	246	110	67	440
Central Highlands	2	1	43	23	12	81
Wimmera	1	-	18	11	4	36
Northern Mallee	1	-	28	21	8	59
Loddon-Campaspe	3	1	72	47	31	155
Goulburn	8	3	156	89	46	301
North Eastern	6	2	152	87	56	302
East Gippsland	4	2	101	53	21	181
Central Gippsland	8	2	167	100	94	370
East Central	2	-	43	25	19	89
Total Victoria	52	18	1,125	619	387	2,200

(a) Steers and bullocks, 1 year and over.

MEAT CATTLE NUMBERS, VICTORIA, AT 31 MARCH

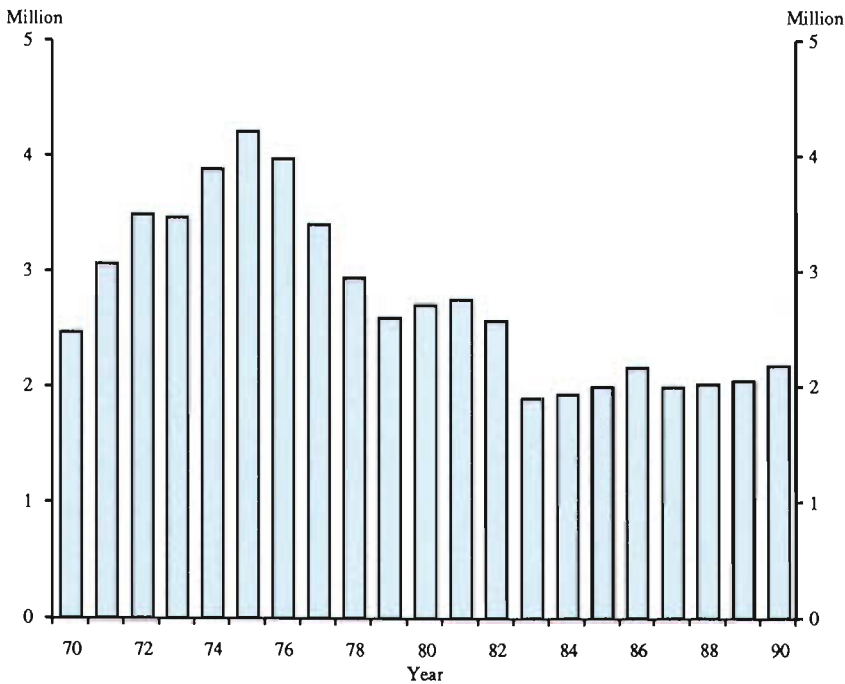


TABLE 6.33 DISTRIBUTION OF MILK CATTLE BY STATISTICAL DIVISION AT 31 MARCH 1990 ('000)

Statistical division	<i>Bulls for service</i>		<i>Cows and heifers for milk and cream</i>				Total
	<i>1 year and over</i>	<i>Under 1 year</i>	<i>Cows in milk and dry</i>	<i>Heifers</i>		<i>House cows and heifers</i>	
				<i>1 year and over</i>	<i>Under 1 year</i>		
Melbourne	-	-	6	2	1	-	9
Barwon	1	-	72	17	15	-	107
South Western	4	1	205	51	46	-	307
Central Highlands	1	-	5	2	1	-	9
Wimmera	-	-	1	-	-	-	1
Northern Mallee	-	-	24	6	6	-	36
Loddon-Campaspe	1	-	89	22	21	-	134
Goulburn	3	1	203	48	48	-	303
North Eastern	-	-	39	10	8	-	58
East Gippsland	1	-	51	12	12	-	75
Central Gippsland	3	2	234	56	53	-	349
East Central	1	-	37	9	8	-	55
Total Victoria	15	5	968	234	220	3	1,445

TABLE 6.34 MILK PRODUCTION, VICTORIA

Year ended 30 June -	Million litres	Year ended 30 June -	Million litres
1985	3,540	1988	3,649
1986	3,575	1989	3,792
1987	3,692	1990	3,787

TABLE 6.35 PIGS AND PIG KEEPERS BY STATISTICAL DIVISION AT 31 MARCH 1990

Statistical division	Boars	Breeding sows	All other	Total pigs	Pig keepers
Melbourne	205	2,584	17,582	20,371	17
Barwon	61	851	5,207	6,119	26
South Western	156	1,430	15,412	16,998	75
Central Highlands	1451	2,109	18,085	20,339	32
Wimmera	358	4,959	36,604	41,921	162
Northern Mallee	282	3,539	24,967	28,788	140
Loddon-Campaspe	1,165	18,955	170,125	190,245	186
Goulburn	596	8,998	57,768	67,362	131
North Eastern	150	1,902	13,427	15,479	67
East Gippsland	22	247	1,526	1,795	14
Central Gippsland	130	2,216	15,202	17,548	60
East Central	14	174	1,008	1,196	8
Total Victoria	3,284	47,964	376,913	428,161	918

TABLE 6.36 POULTRY SLAUGHTERED FOR HUMAN CONSUMPTION, VICTORIA
(^{'000})

Year ended 30 June-	Chickens (i.e. broilers, fryers, or roasters)	Hens and stags	Ducks and drakes
1985	55,995	2,264	452
1986	61,644	2,614	616
1987	62,466	2,441	637
1988	68,325	2,829	703
1989	68,943	2,719	633
1990	68,335	2,154	657

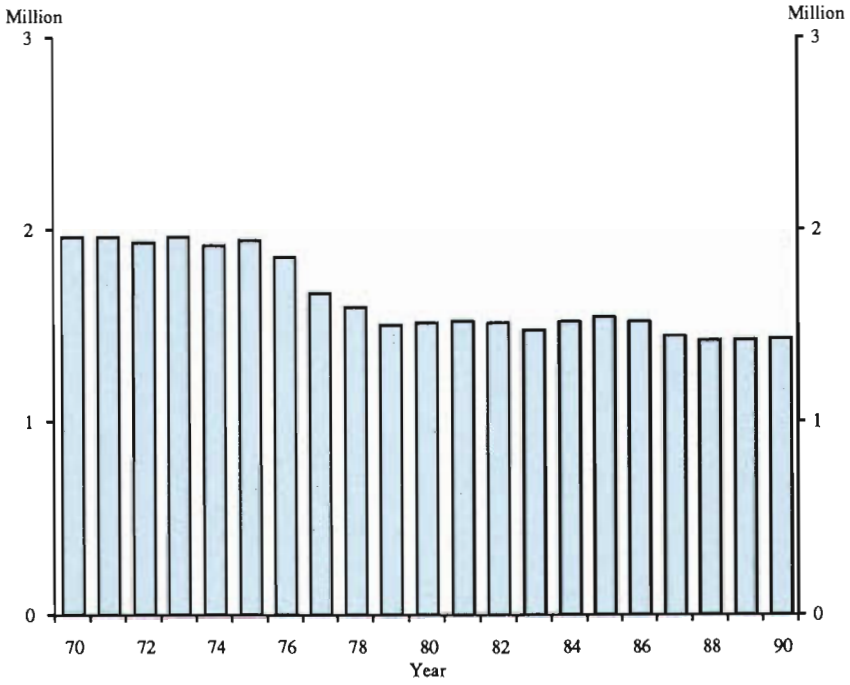
TABLE 6.37 DRESSED WEIGHT OF POULTRY SLAUGHTERED, FRESH AND
FROZEN (a) (b), VICTORIA
(^{'000} kg)

Year ended 30 June-	Chickens (i.e. broilers, fryers, or roasters)	Hens and stags	Ducks and drakes
1985	75,086	3,337	865
1986	84,434	4,029	1,132
1987	84,646	3,959	1,202
1988	96,279	4,655	1,326
1989	97,409	4,547	1,206
1990	92,608	3,708	1,222

(a) Dressed weight of whole birds, pieces, and giblets intended for sale as reported by producers.

(b) Fresh: sold immediately after slaughter or chilled for sale soon after. Frozen: frozen hard for storage of indefinite duration.

MILK CATTLE NUMBERS, VICTORIA, AT 31 MARCH



PIG NUMBERS, VICTORIA, AT 31 MARCH

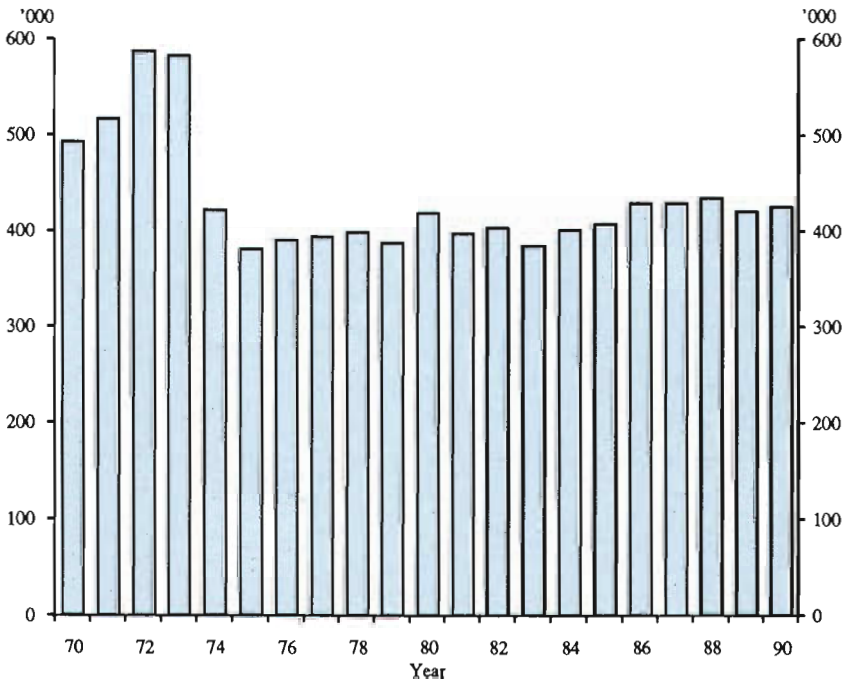


TABLE 6.38 BEEHIVES, HONEY, AND BEESWAX, VICTORIA

Year ended 30 June-	Production			
	Beekeepers	Hives	Honey	Beeswax
	number	number	tonnes	tonnes
1985	436	95,130	4,224	89
1986	456	101,002	4,210	81
1986 (a)	107	58,116	3,022	58
1987	111	58,948	3,107	52
1988	145	59,377	3,824	64
1989	130	50,561	2,886	66
1990	131	56,657	3,127	58

(a) See footnote (b) to Table 6.7.

REFERENCES

ABS publications

- Agricultural Industries, Australia, Structure of Operating Units* (7102.0)
Australian National Accounts, National Income and Expenditure (5206.0)
Environmental Issues and Usage of National Parks, Australia (4115.0)
Principal Agricultural Commodities, Australia, Preliminary (7111.0)
Principal Agricultural Commodities, Victoria, Preliminary (7111.2)
Selected Agricultural Commodities, Australia, Preliminary (7112.0)
Shearing and Wool Production Forecast, Australia, Preliminary (7210.0)
Sheep Numbers, Shearing and Wool Production Forecast, Australia, Preliminary (7211.0)
Livestock Products, Australia (7215.0)
Livestock and Livestock Products, Victoria (7221.2)
Crops, Pastures and Fruit, Victoria (7330.2)
Agricultural Land Use and Selected Inputs, Victoria (7411.2)
Value of Agricultural Commodities Produced, Victoria (7501.2)
Value of Selected Agricultural Commodities Produced, Australia, Preliminary (7502.0)
Value of Agricultural Commodities Produced, Australia (7503.0)

Non-ABS source

Australian Wheat Board